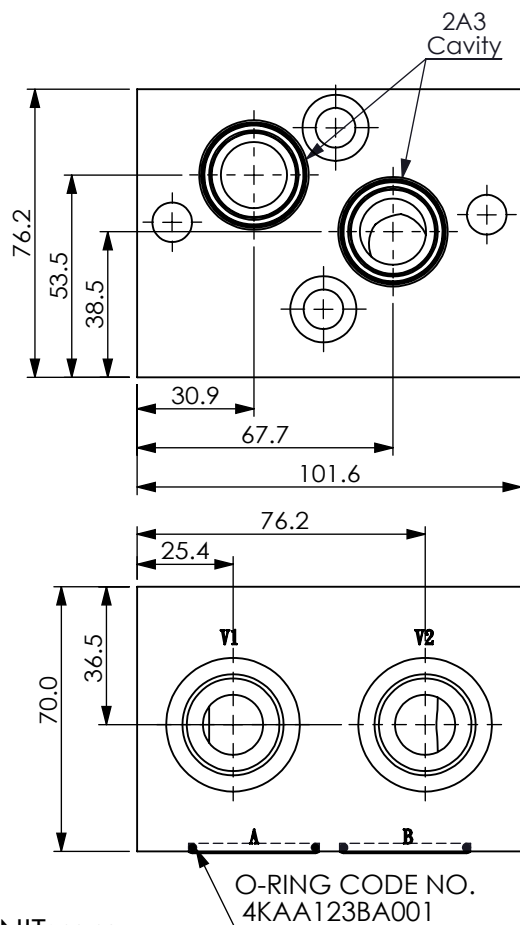


Ordering Code: **MM-120-CDW-X-Y-Z-A01**

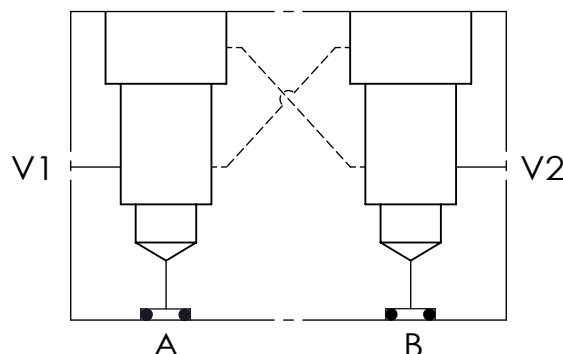
MM-120-CDW-X-Y-Z-T01



UNIT:mm



Hydraulic Circuit CDW



TECHNICAL DATA

Aluminum (A01)
Body Pressure Rating: 210 bar
Steel (T01)
Body Pressure Rating: 350 bar

Rated flow: 120 l/min

Cavity: Refer to 2A3

* Refer to Winner Cartridge Valves Catalog.

Aluminum	1.13 kg(WITHOUT VALVES)
Steel	3.3 kg(WITHOUT VALVES)

* If you need the special specification.
Please contact us.

X

SELECTION FOR V1 PORT CONTROL

2A3 CAVITY ONLY(WITHOUT VALVE)

CB3H CB2A33HL (3:1 , 280bar)

CO20 CO2A3020N (2.0bar)

Please refer to the list price of cartridge program.

Y

SELECTION FOR V2 PORT CONTROL

2A3 CAVITY ONLY(WITHOUT VALVE)

CB3H CB2A33HL (3:1 , 280bar)

CO20 CO2A3020N (2.0bar)

Please refer to the list price of cartridge program.

PORT SIZE

Z

PORTS

V1,V2

G06

G 3/4"