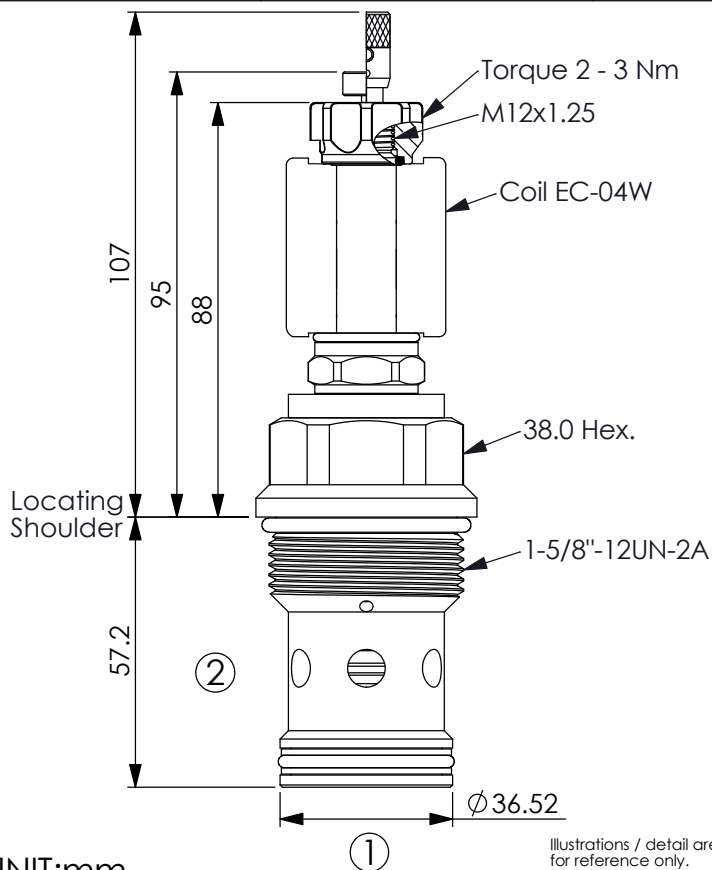


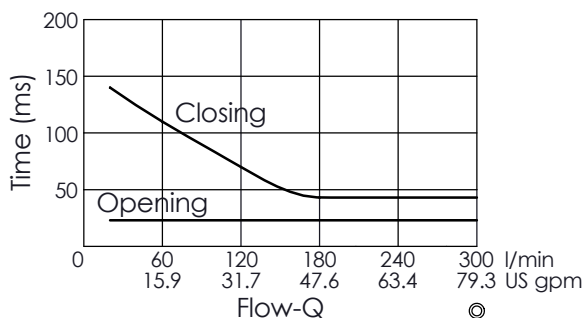
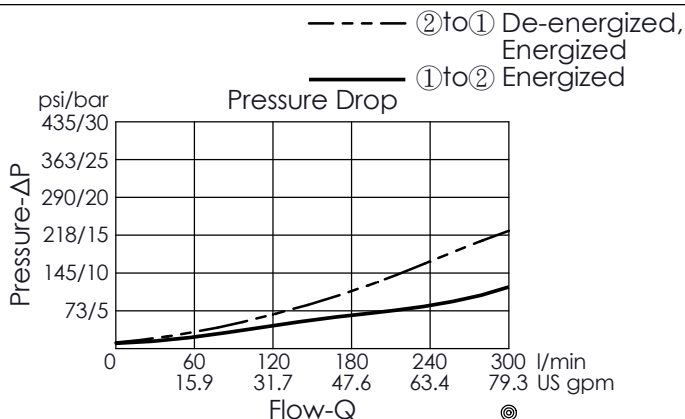
SOLENOID OPERATED VALVE (Pilot Operated) (High Flow Poppet 2-Way Normally-Closed Cartridge Style)

Ordering Code: **EP-20W-X-Y-Z-95**



UNIT:mm

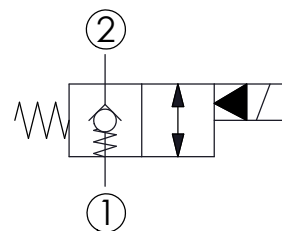
Illustrations / detail are for reference only.
Data subject to change.



The performance curve or data is only for reference, as customers' using condition, pressure, flow, hydraulic fluid viscosity, cleanliness, temperature and so on are different, the curve or data will be different.

Y OPERATION

03 Normally-Closed, Reverse Flow
Energized, Nose-in, Side-out Operation



TECHNICAL DATA

Max. Operating pressure:	350	bar
Rated flow:	300	l/min
Cavity-Tooling:	20W-2 (20WB-2)	
Installation torque:	110 - 130	Nm
Weight:	0.655 (Z=N)	kg

Internal Leakage Approximately:
0.15 cc/minute
(3 drops/minute) max. at 350 bar

Hydraulic Fluid Viscosity · Cleanliness · Temperature Level:
Please refer WINNER technical information.
(T.101.101.E HYDRAULIC FLUID (A) VISCOSITY)
(T.101.102.E HYDRAULIC FLUID (B) CLEANLINESS)
(T.101.103.E HYDRAULIC FLUID (C) TEMPERATURE)

Minimum Voltage Required:
90 % of nominal

Coils must be ordered separately

Mounting Position: unrestricted

X STRUCTURE

2A 2 Ports · 20 Watt. Coil
 $\phi 12.7$ mm tube

Z OPTIONS

N Non-adjustable

P Push Style
Manual Override

T Push and Twist Style
Manual Override
(For emergency or test use only.
Please keep at the normal
operational position after
turning counterclockwise.)
(A larger force is required for
downward push during
high-pressure operations,
please contact Winner's sales
department.)